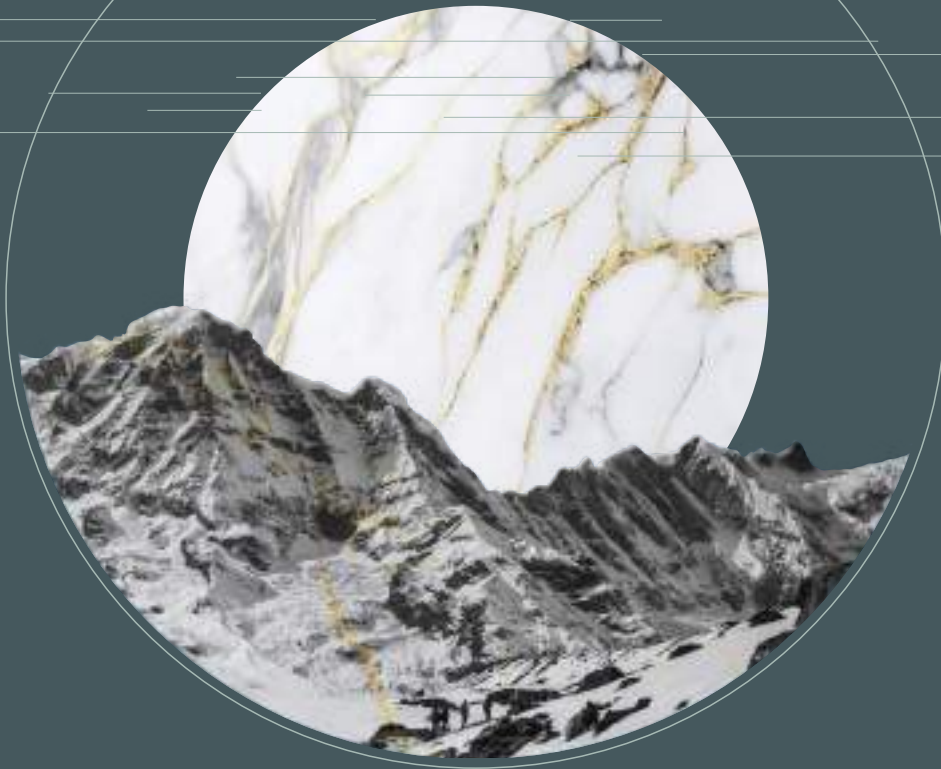


Lactose

CERAMIC

WHERE STONE MEETS MASTERY



600X1200MM
Goldenlake
collection

www.lactoseceramic.com

Lactose

CERAMIC

“WELCOME TO A
LIFESTYLE THAT
IS AS LUXURIOUS AS
IT IS INVITING”



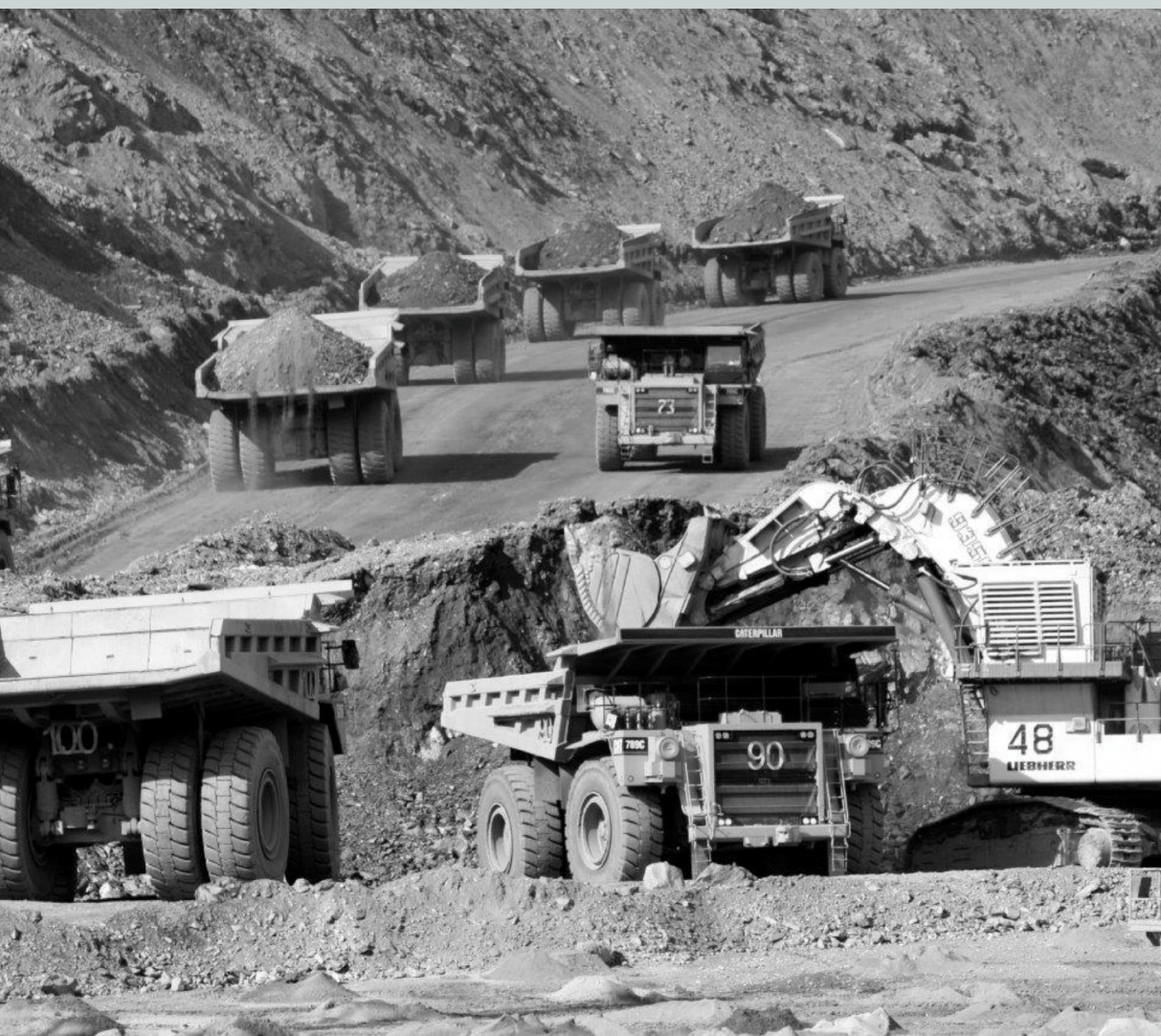
**“INTRODUCING LACTOSE,
WHERE INNOVATION IS THE
CORNERSTONE, EXCELLENCE
IS THE STANDARD, AND A
BRIGHT FUTURE IS CRAFTED”**

LACTOSE is the premium ceramic brand par excellence, with products conspicuous for their elegance and sophistication, based on cutting-edge technology and modern design. A brand with a forward looking philosophy and strong emphasis on innovation and design. We build on our experience as manufacturers and keen interest in progress, redefining ourselves to keep up with the times. With products more versatile than ever before thanks to our new formats, finishes and textures, we aspire to create exquisitely desirable products truly distinctive from all the rest.



SELECTING THE FINEST RAW MATERIAL FOR SUPERIOR CERAMIC

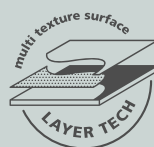
At Lactose, we believe that the foundation of exceptional ceramic tiles lies in the meticulous selection of raw materials. We pride ourselves on our rigorous process of sourcing only the finest and highest quality materials available. From meticulously chosen clays to premium silica and feldspar, every component undergoes thorough scrutiny to ensure it meets our exacting standards.



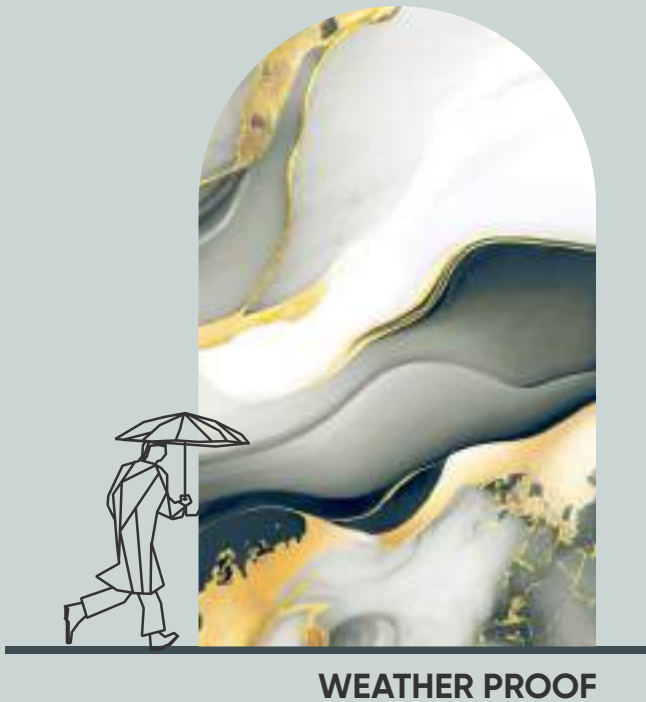
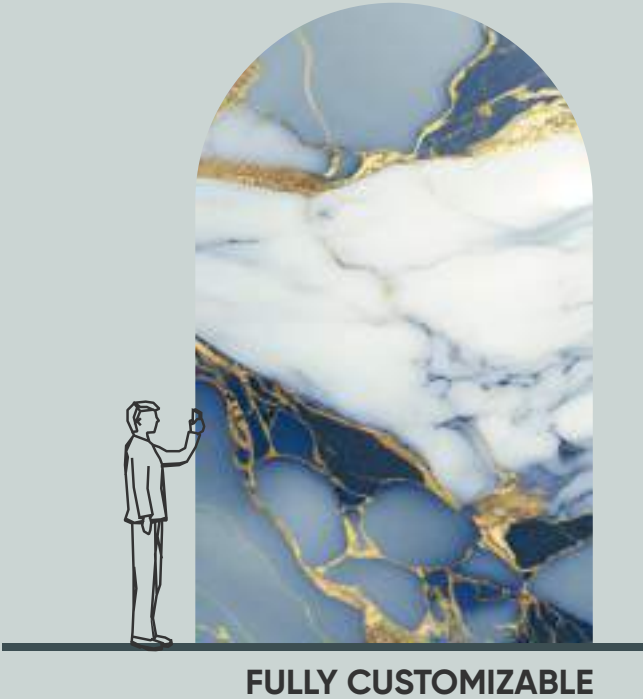
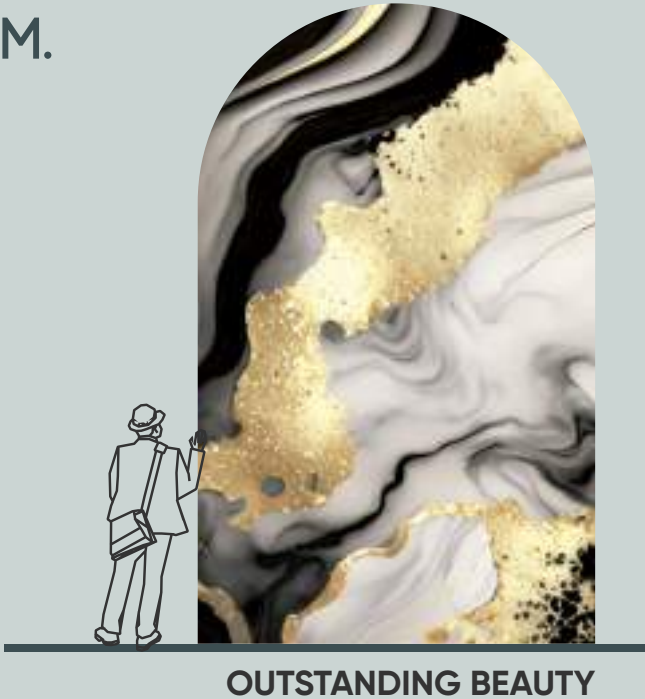
DISCOVER CUTTING-EDGE SOLUTIONS

At Lactose Ceramic, we are dedicated to maintaining a leading edge in both technology and the application of new products and services. Our commitment lies in impressing customers and ensuring high added value through continuous innovation.

We constantly strive to stay ahead in technological advancements, pushing boundaries to deliver superior quality and performance. Our relentless pursuit of excellence drives us to explore new avenues, creating products and services that not only meet but exceed customer expectations.



REDEFINING SPACES
WITH RADIANT GLOSS
TRANSFORM YOUR
SURROUNDINGS WITH
ELEGANCE AND CHARM.



LUXURY IS WHEN IT SEEMS FLAWLESS, WHEN YOU REACH THE RIGHT BALANCE BETWEEN ALL ELEMENTS

Welcome to the epitome of elegance, our Goldenlake Collection. Immerse yourself in a world where glossy finishes exude unparalleled sophistication, elevating every space they adorn to new heights of luxury and style.

Experience the allure of glossy finishes with the Goldenlake Collection. Elevate your interiors with the timeless elegance and radiant charm of these exquisite tiles, and embark on a journey of unparalleled luxury and sophistication.



ELEVATE YOUR SPACES WITH TIMELESS SOPHISTICATION

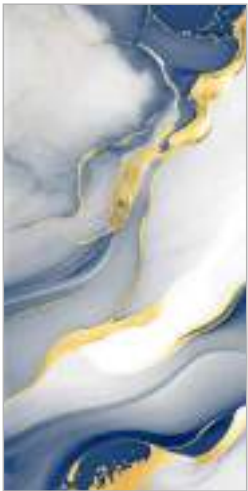
Crafted with precision and attention to detail, our tiles are synonymous with impeccable quality and craftsmanship. Each tile undergoes rigorous testing to ensure durability, longevity, and performance that exceeds expectations.

Goldenlake
collection



PRODUCT RANGE
600X1200MM

Lactose
CERAMIC



Lactose
CERAMIC

Goldenlake
collection

TILES NAME :
DRAGON BLISS

FINISH :
GLOSSY

SIZE :
600X1200MM
60X120CM
2'X4'

RANDOM
02



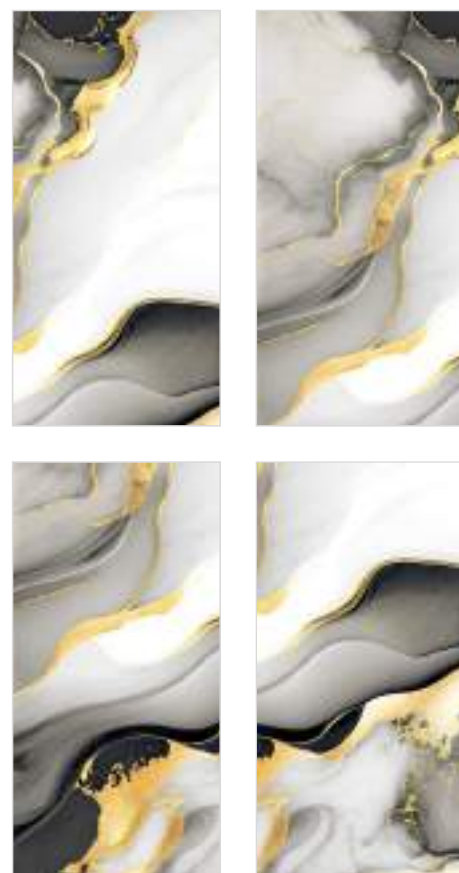


TILES NAME :
DUST BLACK

FINISH :
GLOSSY

SIZE :
600X1200MM
60X120CM
2'X4'

RANDOM
04

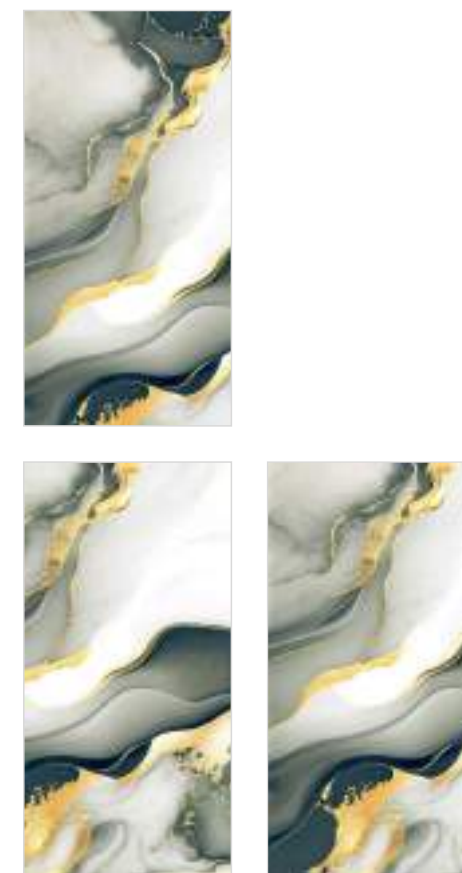


TILES NAME :
DUST GREEN

FINISH :
GLOSSY

SIZE :
600X1200MM
60X120CM
2'X4'

RANDOM
03



Lactose
CERAMIC

Goldenlake
collection

TILES NAME :
ECASCADE BLACK

FINISH :
GLOSSY

SIZE :
600X1200MM
60X120CM
2'X4'

RANDOM
03







TILES NAME :
ECASCADE BLUE

FINISH :
GLOSSY

SIZE :
**600X1200MM
60X120CM
2'X4'**

RANDOM
03



TILES NAME :
FUSION GOLD

FINISH :
GLOSSY

SIZE :
**600X1200MM
60X120CM
2'X4'**

RANDOM
03



Lactose
CERAMIC

Goldenlake
collection

TILES NAME :
FUSION SMOKE

FINISH :
GLOSSY

SIZE :
600X1200MM
60X120CM
2'X4'

RANDOM
03







TILES NAME :
GILDED BLUE

FINISH :
GLOSSY

SIZE :
600X1200MM
60X120CM
2'X4'

RANDOM
03



TILES NAME :
ECASCADE BLUE

FINISH :
GLOSSY

SIZE :
600X1200MM
60X120CM
2'X4'

RANDOM
03



Lactose
CERAMIC

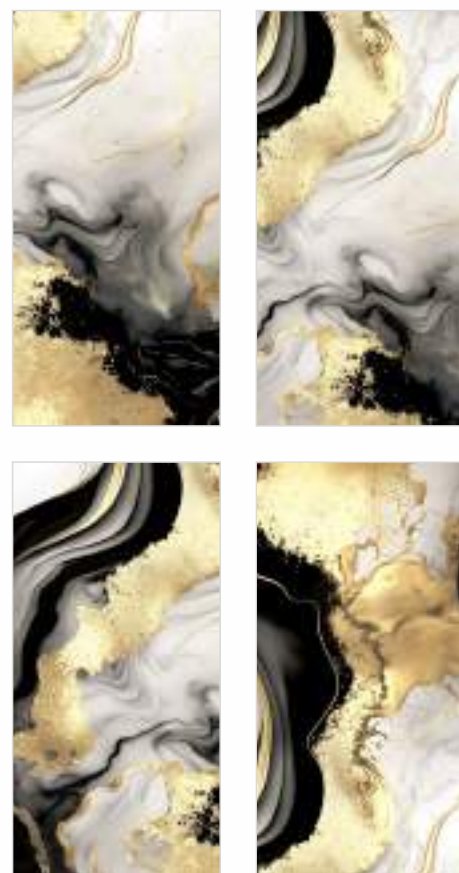
Goldenlake
collection

TILES NAME :
GLIMMER BLACK

FINISH :
GLOSSY

SIZE :
600X1200MM
60X120CM
2'X4'

RANDOM
04





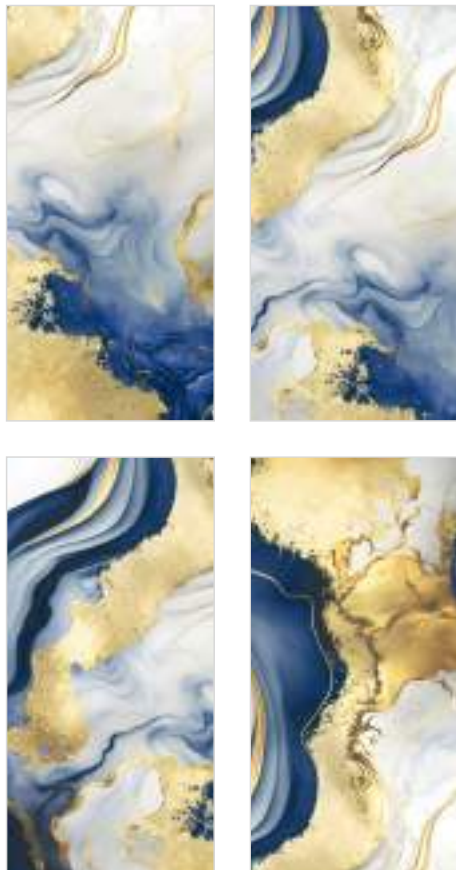


TILES NAME :
GLIMMER BLUE

FINISH :
GLOSSY

SIZE :
600X1200MM
60X120CM
2'X4'

RANDOM
04

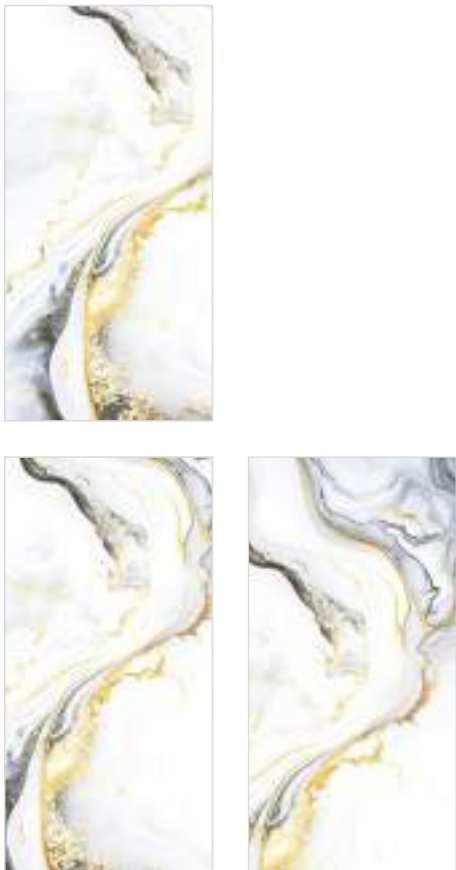


TILES NAME :
GLIMMER WHITE

FINISH :
GLOSSY

SIZE :
600X1200MM
60X120CM
2'X4'

RANDOM
03



Lactose
CERAMIC

Goldenlake
collection

TILES NAME :
GOLD ESSENCE

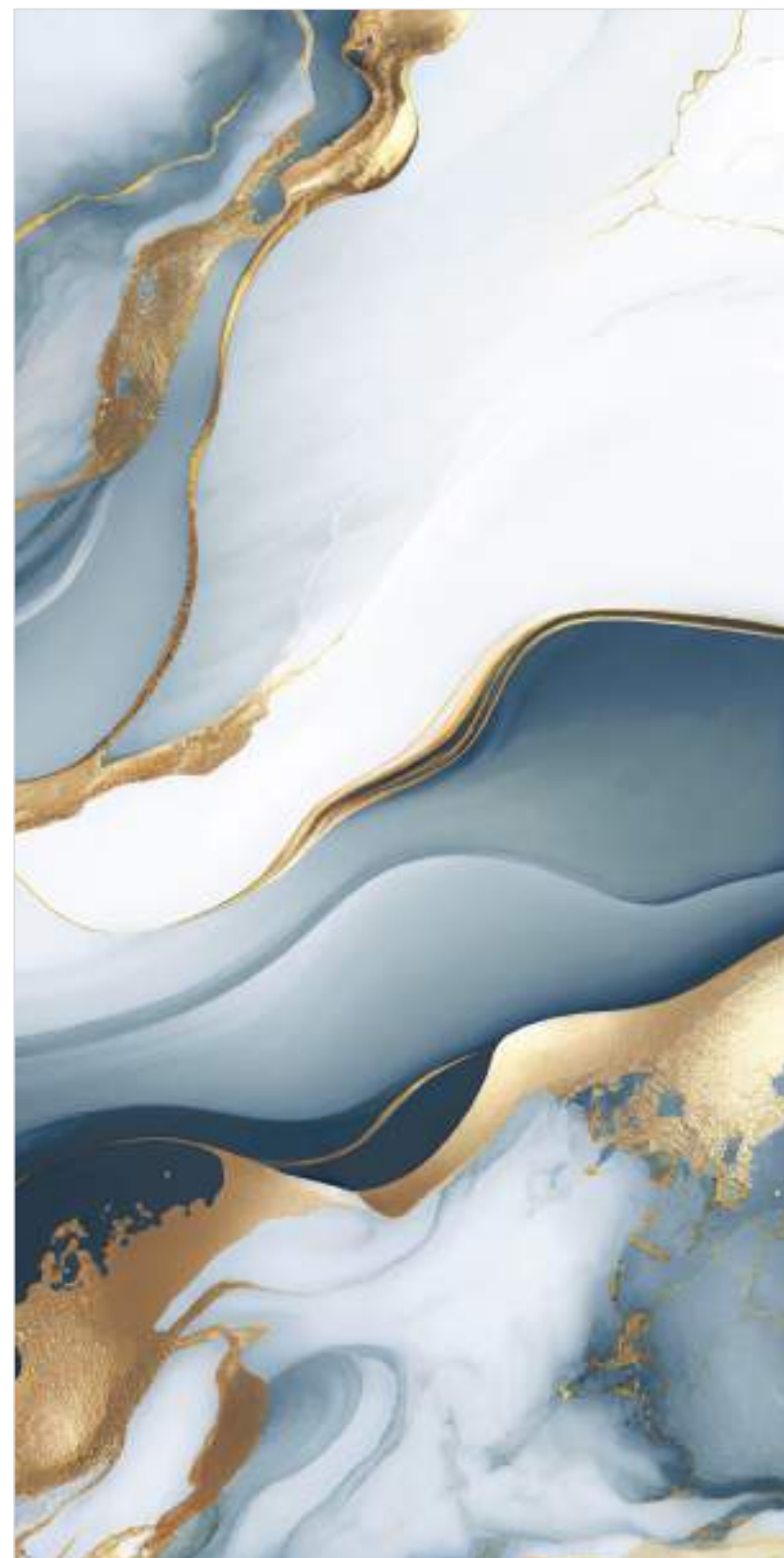
FINISH :
GLOSSY

SIZE :
600X1200MM
60X120CM
2'X4'

RANDOM
03







TILES NAME :
GOLDGILT AQUA

FINISH :
GLOSSY

SIZE :
600X1200MM
60X120CM
2'X4'

RANDOM
03



TILES NAME :
GOLDGILT BLUE

FINISH :
GLOSSY

SIZE :
600X1200MM
60X120CM
2'X4'

RANDOM
03



Lactose
CERAMIC

Goldenlake
collection

TILES NAME :
HAVEN GOLD

FINISH :
GLOSSY

SIZE :
600X1200MM
60X120CM
2'X4'

RANDOM
03







TILES NAME :
LUSTROS GOLD VEIN

FINISH :
GLOSSY

SIZE :
600X1200MM
60X120CM
2'X4'

RANDOM
03



TILES NAME :
MIRAGE GOLD

FINISH :
GLOSSY

SIZE :
600X1200MM
60X120CM
2'X4'

RANDOM
02



Lactose
CERAMIC

Goldenlake
collection

TILES NAME :
RADIANT BLACK

FINISH :
GLOSSY

SIZE :
600X1200MM
60X120CM
2'X4'

RANDOM
03





TILES NAME :
REFLECTIVE AQUA

FINISH :
GLOSSY

SIZE :
600X1200MM
60X120CM
2'X4'

RANDOM
03



TILES NAME :
**REFLECTIVE
BLACK**

FINISH :
GLOSSY

SIZE :
600X1200MM
60X120CM
2'X4'

RANDOM
03



CLEANING & MAINTAINANCE

1. CLEANING AFTER INSTALLATION

FOR REMOVING THE FOLLOWING RESIDUICE	TYPE OF DETERGENT	DETERGENT NAMES
cement base grout grout lime	buffered acid based	keranet
		cement remover
		deterdek pro
		hmk r63
		solvacid

2. EXTRAORDINARY CLEANING

FOR REMOVING THE FOLLOWING RESIDUICE	TYPE OF DETERGENT	DETERGENT NAMES
grease dust footmarks base cleaning	multipurpose alkaline-based (1)	ps87 pro
		intensivreiniger
		hmk r55
coffee coke fruit juice	multipurpose alkaline-based (1)	coloured stain remover
		super deterjet
wine	oxidizing agent	oxidant candeggina
calcareous deposits	acid-based (1)	viakal
rust	acid-based (1)	acido muriatico diluito
inks felt-tipped pen	solvent-based	diluyente nitro, acqua ragia
		coloured stain remover
pneumatic stains from rubber metals or pencils	abrasive paste (1)	vim clorex (2)
		polishing cream (2)
		detergum (3)
tile joint stains	specific	fuganet
		fugenreiniger
clean on a daily basis	neutral universal degreaser	floor cleaner
		cleaner pro
		pflegereiniger
		bonamain + / bmain + smac expresse sgrassatore

SPECIAL MAINTENANCE

REMOVING GLOSSY GLAZE

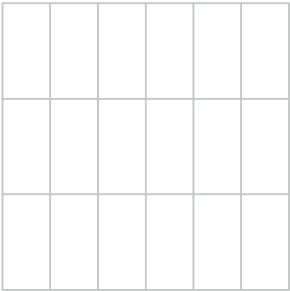
Standard detergents that are available in the market sometimes contain waxes or polish additives that, wash after wash, deposit **glossy glaze** on the floor and causes annoying marks. These types of glazes can also settle on some joint grouts. When simply types of foods such as Coke, wine, water, etc., fall on the floor, they remove this type of glossy glaze and restore the **original appearance** of the tiles (a more opaque look). In the middle of the shinier floor, the areas without wax appear as opaque marks, but they are actually the only clean parts of the floor. In these cases, the following must be done:
1. First of all, remove the glossy glaze from the entire floor (see table below);
2. Then, for daily cleaning, use neutral detergents that do not contain wax or polishing glaze

NEVER USE: Waxing and impregnating agents - Acid or alkaline detergents - Abrasive pastes - Abrasive brushes or sponges.

RESIDUES TO BE REMOVED	TYPE OF DETERGENT	DETERGENT NAMES
glossy glaze	weak acidulous	tile cleaner pure (*)

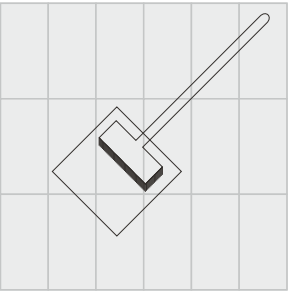
(*) Do not follow the instructions on the package, just apply the pure detergent, leave it on for 5-10 minutes, rub it with soft pads (white, yellow) and rinse it thoroughly with water.

1.



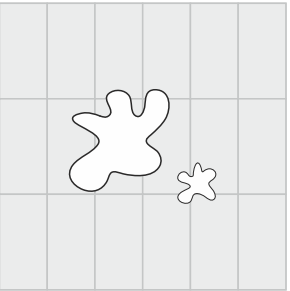
Original Floor

2.



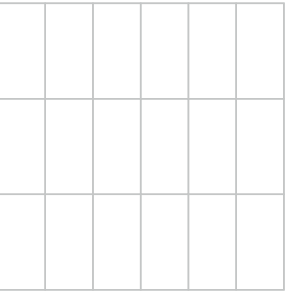
After cleaning detergents containing waxes.

2.



Simple foodstuffs (Coca-Cola, wine, water etc) can remove the bright patina. The original surface is more matt.

2.



Remove the patina with detergent (Faber tile cleaner, used neat), and use detergent without waxes for everyday cleaning.

CLEANING “AFTER THE INSTALLATION”

1. Cleaning “after the installation” helps remove residues of grout-joints, cement and lime. This is obligatory at the end of the installation, for glazed tiles and unglazed tiles.

2. If the cleaning “after the installation” is not carried out properly or if is not carried out at all, is often a cause of marks that prevent the floor from being clean even if a good daily cleaning is performed.

3. Whenever is possible, especially for medium to large surfaces, it is advisable to use a single-brush machine with soft disks (white or beige).

4. cleaning cement-based grouts mixed with water.
- It is carried out with specific detergents based with buffered and diluted acids. The table below shows some of these detergents, which are easily available in the market.

INSTRUCTIONS ON HOW TO CLEAN “AFTER THE INSTALLATION”

1. Clean 4-5 days after the grouting (the grout must be hardened); do not wait over 10 days. In addition to this period, the cleaning can become very laborious.

2. Moisten the floor with water before cleaning. This way the groutings are soaked with water and the contact with detergents is reduced.

3. Let the detergents operate for limited periods, hence rinse out with water as soon as possible.

4. It must not be carried out if the tiled surfaces are very hot (i.e. exposed to the sun during very warm days); this must be avoided as the action of aggressive chemicals become very harsh.On the summer, proceed with the operation during the coolest period of the day.

5. Make sure to always perform a precautionary test before using the product (on a tile that is not laid), especially for Lapped or Polished products.

6. cleaning for epoxy, bi-component and reagent grouts In these cases the removal must be carried out immediately and carefully following the recommendations of the manufacturers, as these grout harden very fastly, even in a few minutes. Please carefully follow the cleaning mode specified by the manufacturer of the grout used; verify its effectiveness (backlight also) with a preliminary cleaning test before grouting the entire floor/wall.

7. “Antislip” tiles that are made with rough and/or textured surfaces must be cleaned very laboriously. Therefore, it is advisable to clean “after the installation”, quickly and thoroughly, using a single-brush machine with disks white and beige.

TECHNICAL SPECIFICATION

CHARACTERISTIC	STANDARD AS PER ISO13006:2018/ EN14411 Gr.BIa	VALUE	TEST METHOD
Regulatory Properties			
Deviation in length and width	± 0.30 % (±1.00mm)	± 0.10 %	ISO 10545-2
Deviation in thickness	± 5.00 % (±0.50mm)	± 4.00 %	ISO 10545-2
Straightness in side	± 0.30 % (±0.80mm)	± 0.10 %	ISO 10545-2
Rectangularity	± 0.30 % (±1.50mm)	± 0.10 %	ISO 10545-2
Surface flatness central curvature	± 0.40 % (±1.80mm)	± 0.20 %	ISO 10545-2
Surface flatness edge curvature	± 0.40 % (±1.80mm)	± 0.20 %	ISO 10545-2
Surface flatness warpage	± 0.40 % (±1.80mm)	± 0.10 %	ISO 10545-2
Surface quality	> 95% defects free	> 95% defects free	ISO 10545-2
Small Color Difference(For Plain Color)	ΔE <1.00	ΔE < 0.30	ISO 10545-16
Glossiness (Polished)	as per mfg.	Gloss Value > 90	Glossmeter 60°
Glossiness (Matt)	as per mfg.	3° < GLOSS < 7°	Glossmeter 60°
Glossiness (satin/Posh)	as per mfg.	7° < GLOSS < 18°	Glossmeter 60°
Structural Properties			
Water absorption	0.50 % ≤ Ev ≤ 3.00 %	0.060 % ≤ Ev ≤ 3.00 %	ISO 10545-3
Bulk density	as per mfg.	> 2.28 gm/cc	ISO 10545-3
Massive Mechanical Properties			
Modulus of rupture	Min. 30.0 N/mm²	Min. 35.0 N/mm²	ISO 10545-4
Breaking strength thickness ≥7.5	Min. 700.0 N	Min. 1000.0 N	ISO 10545-4
Breaking strength thickness ≥7.5	Min. 1100.0 N	Min. 1300.0 N	ISO 10545-4
Breaking strength thickness ≥7.5(For ≥15mm)	Min. 1100.0 N	Min. 1800.0 N	ISO 10545-4
Surface Mechanical Properties			
MOH'S hardness	as per mfg.	Polished Min 4* / Satin,Posh & Matt Min 6	BS EN 15771
Surface abrasion resistance	as per mfg.	Polish Min. Class 2, Satin & Posh Min. Class 3, & Matt Min. Class 4	ISO 10545-7
Deep abrasion resistance	Max. 175mm ³	Max. 132mm ³	ISO 10545-6
Thermal Hydrometric Properties			
Moisture expansion	Max. 0.06%(0.6mm/m)	0.02mm/m	ISO 10545-10
Thermal expansion(COE) at 100°C	as per mfg.	Max. 6.0 x 10 ⁻⁶	ISO 10545-8
Thermal shock resistance	Min. 10 Cycle	Min. 10 Cycle	ISO 10545-9
Impact resistance(COR)	Min. 0.55	Min. 0.55	ISO 10545-5
Frost resistance	as per mfg.	Frost Proof	ISO 10545-12
Chemical Properties			
Resistance to staining glazed	Min. Class 3	Min. Class 4	ISO 10545-14
Resistance to household chemicals & swimming pool salts glazed	Min. Class GB	Min. Class GA	ISO 10545-13
Resistance to low concentrate acid and alkalis glazed	as per mfg.	Min. Class GLA**	ISO 10545-13
Resistance to high concentrate acid and alkalis unglazed	as per mfg.	Min. Class GHB**	ISO 10545-13
Safety Properties			
Skid resistance (COF-WET PENDULAM)##	as per mfg.	Glossy P0(<12),Satin, Posh ≥P1(12-24) Matt ≥P2(25-34)	BS 7976-2
Slip resistance - (Satin / Matt (DCOF) (R value)##	as per mfg.	R9 to R13**	DIN 51130
Fire resistance	as per mfg.	Fire Proof	N.A.

Lactose
CERAMIC

Lactose

CERAMIC

Manufacturing Unit :

Jivapar (C) , Jetpar - Pipli Road,
Morbi, Guj. - 363630

Corporate Office :

A-502 Om Decora 9 Square, 150 Feet Ring Rd,
Nana Mava Circle, Rajkot-360003, Gujarat

Email Us :

info@lactoseceramic.com
export@lactoseceramic.com

Call Us :

+91 75748 02888/+91 75748 02838/+91 75748 02333

Log On To :

www.lactoseceramic.com